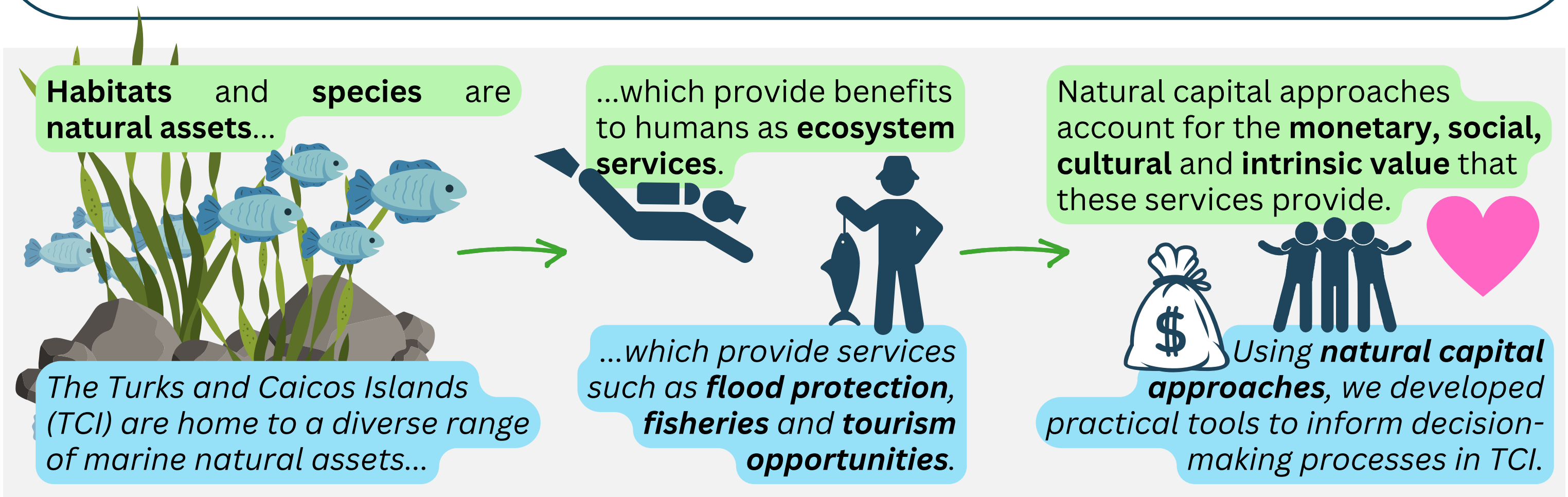


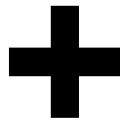
DPLUS119 (WP1): Developing an Asset Register for the Turks and Caicos Coastal-Marine Area



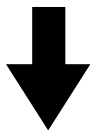
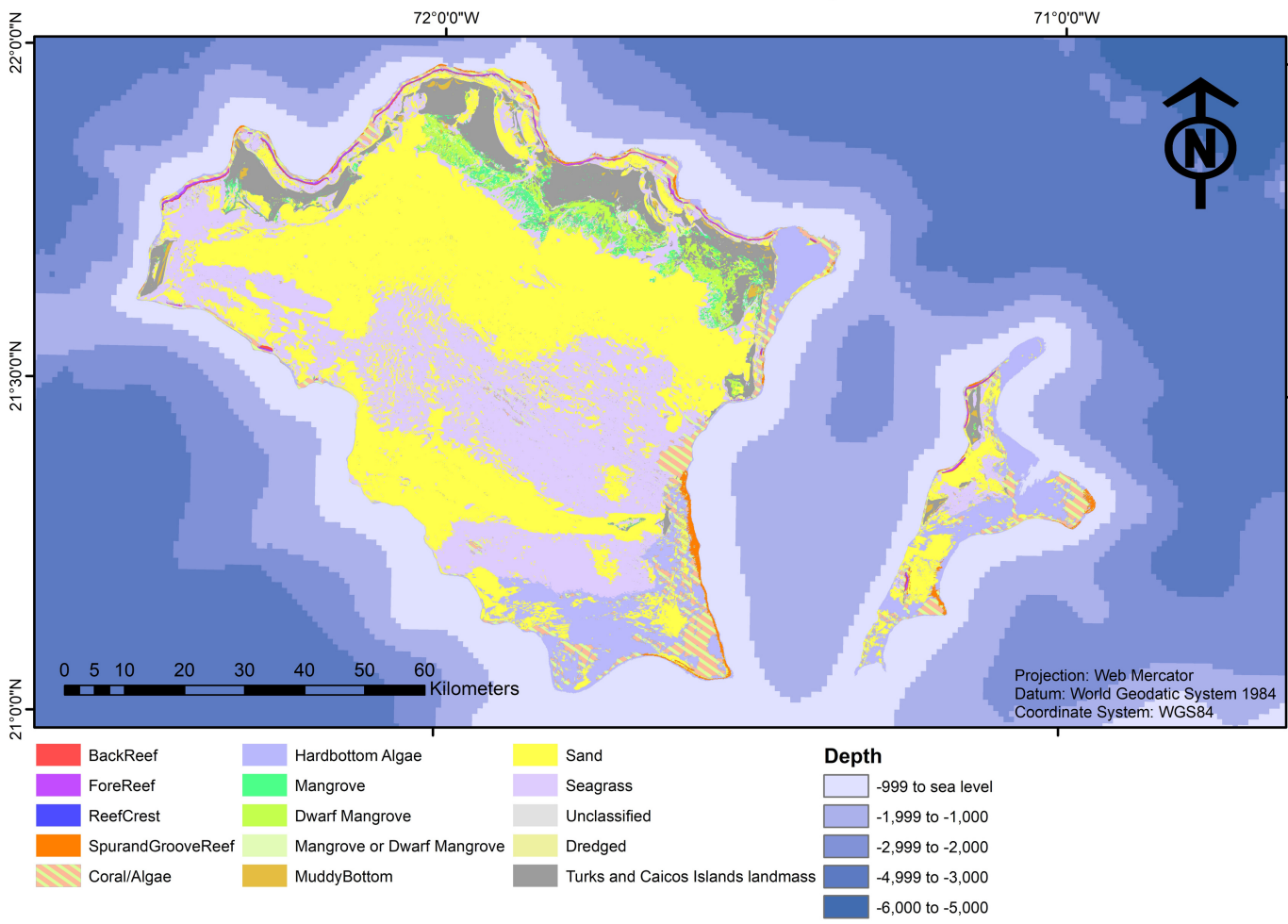
We (DECR and JNCC) collated a list of TCI's marine natural assets and their locations to produce an **asset register** and a **habitat map**. Data on the services they provide were used to create an **asset-service matrix (ASM)**. By combining the ASM and habitat maps, we produced **service delivery maps**.

TCI Asset-Service Matrix (ASM)

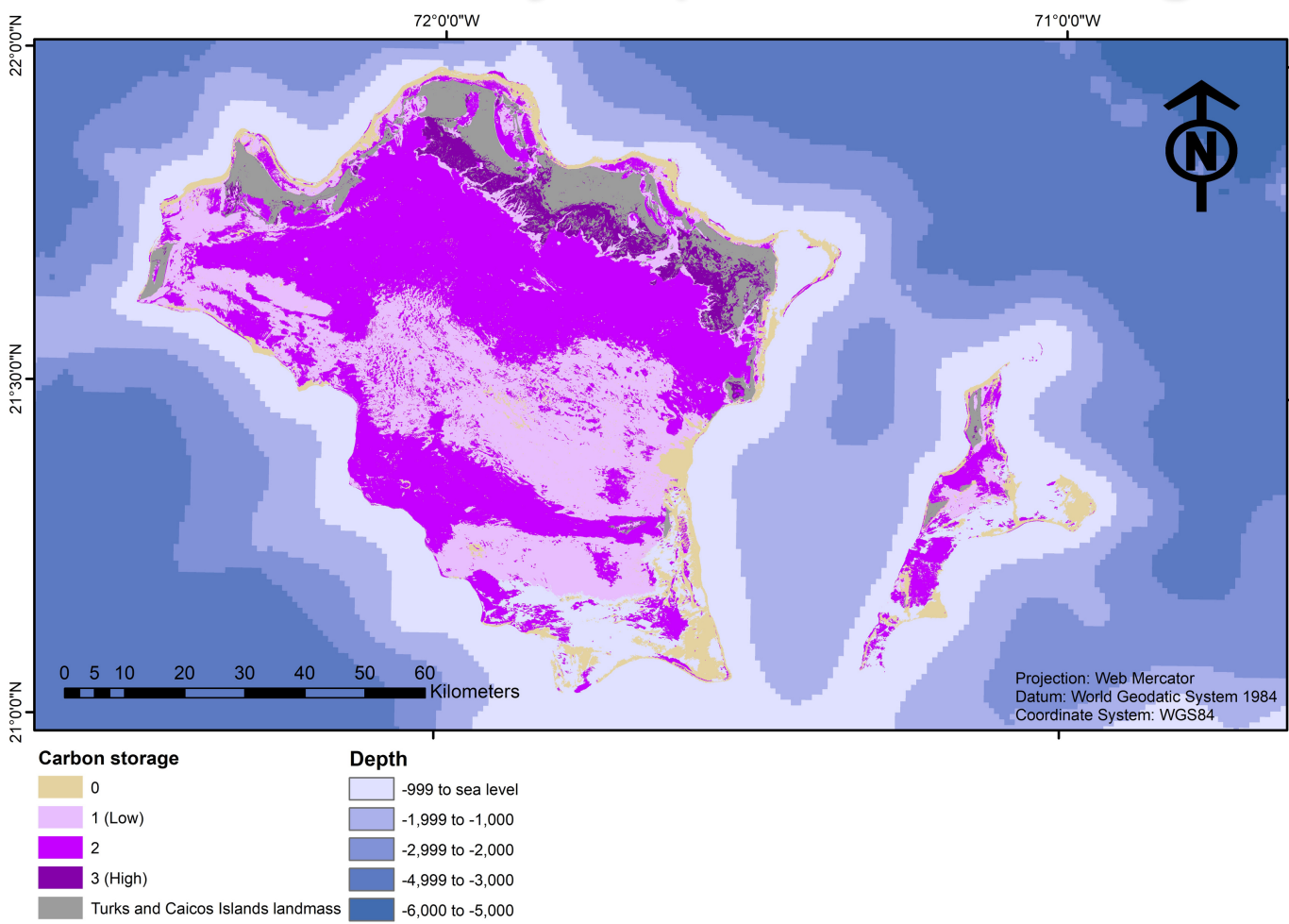
	SUPPORTING							REGULATING					CULTURAL		
	Carbon		Habitat provision					Nursery habitat provision					Tourism	Snorkelling	
	Carbon uptake	Carbon storage	Queen conch	Spiny lobster	Grouper	Reef fish	Turtle	Erosion/ Flood protection	Filtration/storage/ sequestration	Queen conch	Spiny lobster	Grouper	Shark	Turtle	
Dense/sparse algae			3*	1	1			1		1*	2*	1*			1
Dense/sparse seagrass	1	3*	1	1	2	3*	1	1	1*	2*	2*	3*	2*		1
Sand	2	3*	1	1		3*	1		1*				3*	3*	1
Coral/Algae			1*	3*	2*	2*	3*	1		1*	1	2*		1*	1
Reef Crest	3*		2	2	2*	3*		1*				2*		1*	3*
Reef Back			2	2	2	2		2*		3*		2*			
Reef Fore	3*		2	3*	2*	3*	3*	2*				2*		3*	3*
Spur and Groove	3*				2*	3*		1*				2*		3*	3*



Marine Habitat Map of TCI



Service Delivery Map (Carbon Storage)



The ASMs (one each for habitats and species) contain 310 individual pieces of evidence from 65 sources present in the asset register.

We developed **four** service delivery maps:

- **Regulating services** (carbon storage, erosion and flood protection)
- **Provisioning services** (grouper habitat)
- **Cultural services** (snorkelling activities)

Natural capital outputs like these help inform **marine management decisions** and decrease the risk of species and habitats being undervalued and overexploited.

Service delivery maps highlight overlooked services, such as how species' life-stages (e.g. grouper) should be considered in management decisions.

Hooper, T., van Rein, H., Day, J., Cordingley, A. & Lawson, J. (2021). Developing an asset register for the Turks and Caicos coastal-marine area. Report prepared as part of the Darwin Plus 119 project 'Technical assistance programme for effective coastal-marine management in the Turks and Caicos Islands'. JNCC Report No. 692. Joint Nature Conservation Committee (JNCC), Peterborough, UK. ISSN 0963-8091.